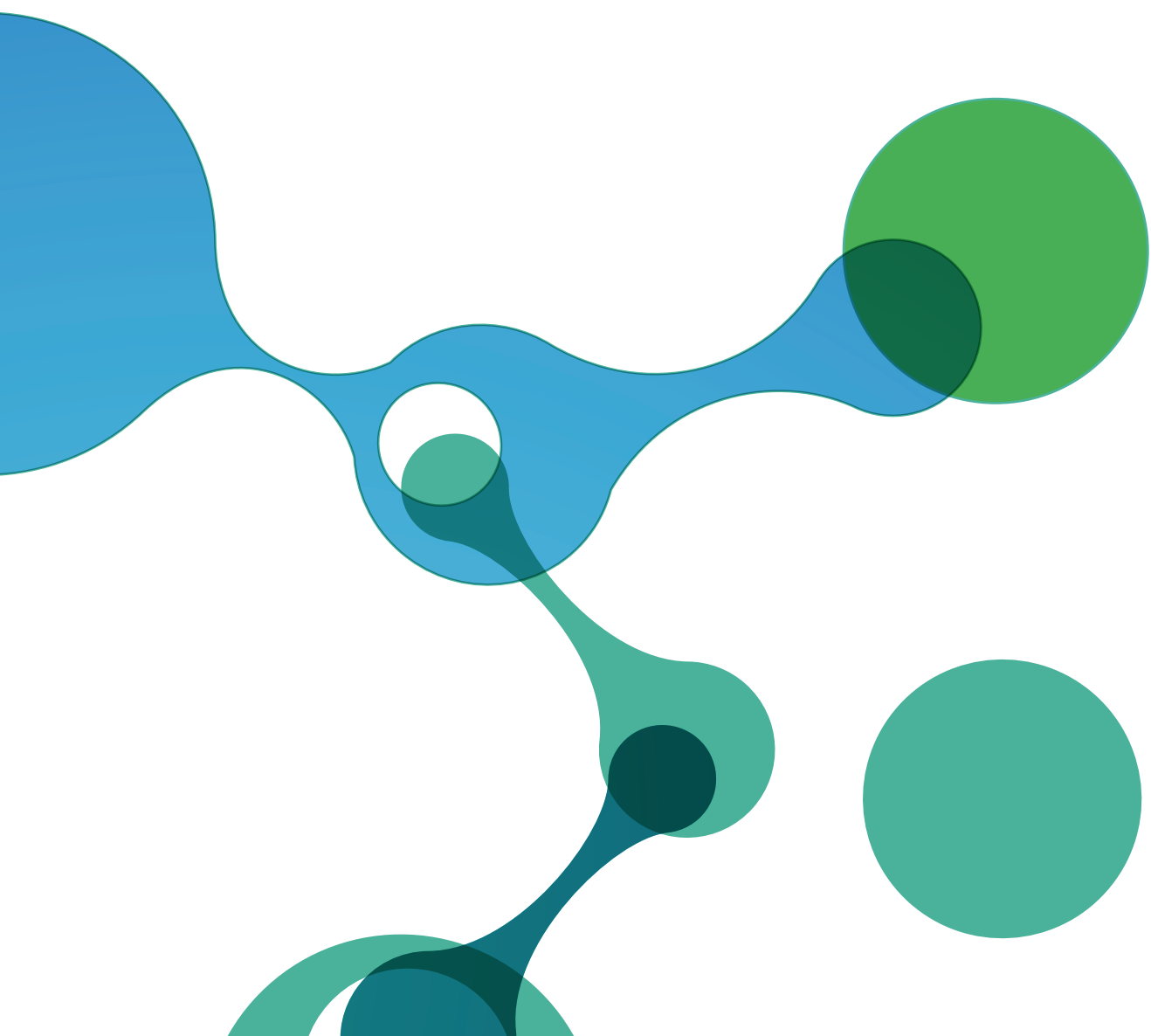




Meizheng Microbiology Test



ABOUT US

Meizheng is focused on food safety testing solutions and has developed multiple product lines for food safety testing, including rapid testing, microbiological testing and lab testing solutions. Our solutions are targeted at food value chain stakeholders in various industries like grain, feed, dairy, honey, meat processing, distribution, etc. Our testing items cover biotoxin, heavy metal, vet drug residue, pesticide residue, nutrition, pathogen, etc.

Through years of development, Meizheng has set up 5 entities and 4 manufacturing sites in China, and has developed technological platforms including immunoassay, ELISA, sample preparation, microbiology, standard materials, automated instrument, etc. The company has passed ISO9001 quality management system, and has also set up a certified third-party testing lab.

Meizheng is committed to provide fit-for-purpose food safety testing solutions. Various series products such as ToxinFast[®], HMFAS[®], AnticFast[®] and MicroFast[®] have been recognized by customers. Besides China, Meizheng products have been sold in over 20 countries like Russia, Belarus, France, United States, India, Vietnam, etc.

In 2019, Meizheng was incorporated into PerkinElmer, and has further expanded overseas network since then. Also, Meizheng has accelerated various products' certification process in AOAC and ILVO.

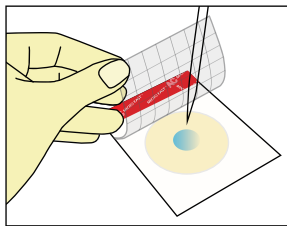
Microbiology segment focuses on the development of rapid test technology of microorganisms. The rapid culturing platform, immunoassay platform and molecular biology technology platform have been established successively. The product portfolio covers the microbial count plates, quantitative real-time PCR kits, Hygiene monitoring system, etc. In 2021, multiple MicroFast[®] Microbial Count Plate have acquired AOAC certificates.



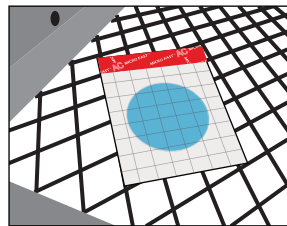
MicroFast[®] Microbial Count Plates

Reliable results, Only 3 Steps

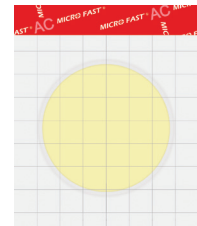
- **Inoculation** Lift the top film and add sample.
- **Incubation** Incubate the plates following the Instruction for Use.
- **Interpretation** Count the colonies.



Inoculation



Incubation



Interpretation

Product Features

Rapid diffusion technology

The sample dilution can quickly spread on the count plate without pressing the plate.

Precise and consistent results

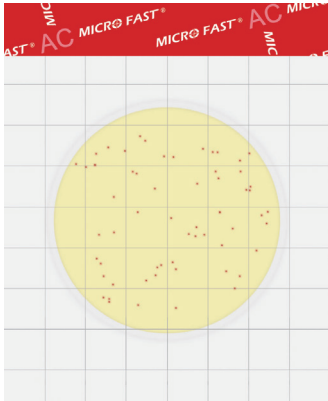
Self-developed microorganisms growing technology makes it easy for the growth of microorganisms with strict growth conditions.

Easy interpretation

The product design is based on the principle of enzyme substrate color reaction. After cultivation, the result can be directly interpreted.

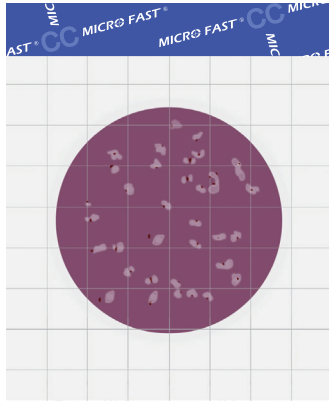
Easy operation, work efficiently

Only 3 steps of operation, most of the microorganism tests can be completed within 24 hours, which shortens the testing time and improves culture efficiency.



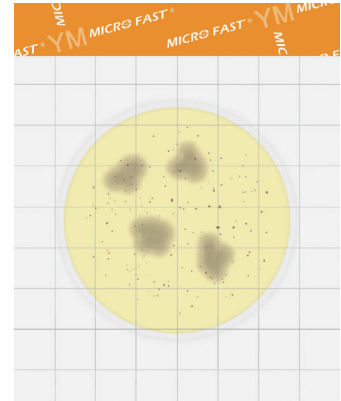
MicroFast® Aerobic Count Plate (AC)

Result in 48±1h
 Culture temperature: 36±1°C
 Interpretation: Red colonies
 Product No.: LR1001
 Identification: Quantitative



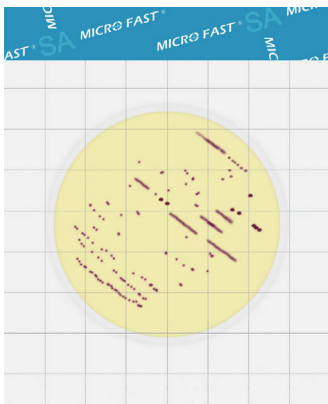
MicroFast® Coliform Count Plate (CC)

Result in 18-24h
 Culture temperature: 36±1°C/44.5±0.2°C
 for thermotolerant coliforms
 Interpretation: Red colonies with
 bubbles
 Product No.: LR1002
 Identification: Quantitative



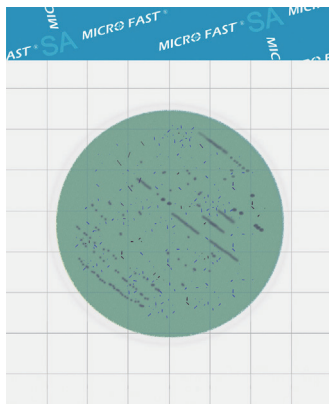
MicroFast® Yeast & Mold (YM) Count Plate

Result in 48h for Yeast
 Result in 72h for Mold
 Culture temperature: 28±1°C
 Interpretation: Count red-violet colonies as yeast, red-violet colonies with irregular edges as mold.
 Product No.: LR1003
 Identification: Quantitative



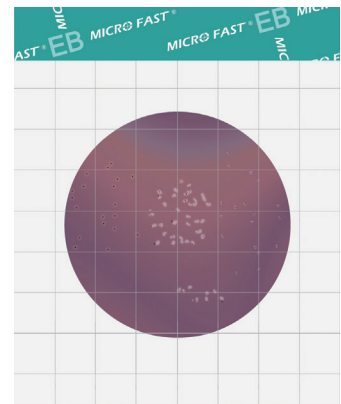
MicroFast® Staphylococcus aureus (SA) Count Plate

Result in 22 -26h
 Culture temperature: 36±1°C
 Interpretation: *Staphylococcus aureus* appears as pink line or dot colonies. Other colonies have to be checked using the Staph confirmation plate.
 Product No.: LR1005
 Identification: Quantitative/Qualitative



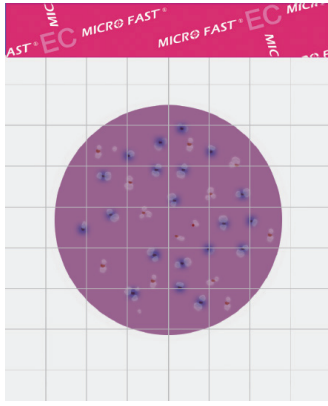
MicroFast® Staphylococcus aureus (SA) Confirmation Plate

Result in 1.5 -4h
 Culture temperature: 36±1°C
 Interpretation: Dark purple lines or dots
 Product No.: LR1005Q
 Identification: Quantitative/Qualitative



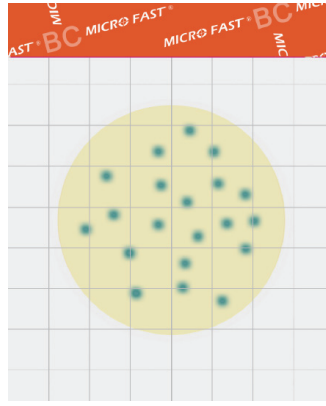
MicroFast® Enterobacteriaceae (EB) Count Plate

Result in 18 -24h
 Culture temperature: 36±1°C
 Interpretation: Count all red and yellow colonies with or without bubbles.
 Product No.: LR1011
 Identification: Quantitative



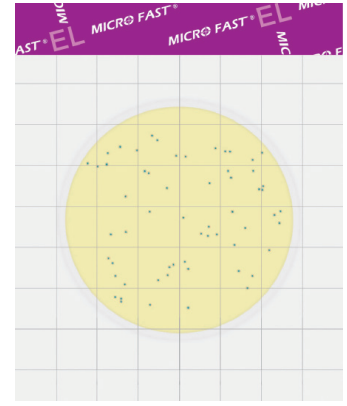
MicroFast® Coliform & *E. coli* (EC) Count Plate

Result in 24±2 h
 Culture temperature: 36±1°C
 Interpretation: Count blue colonies with bubbles as *E. coli*, count blue and red colonies with bubbles as coliform.
 Product No.: LR1007
 Identification: Quantitative



MicroFast® *Bacillus cereus* (BC) Count Plate

Result in 18 -24 h
 Culture temperature: 30°C
 Interpretation: blue-green cluster colonies
 Product No.: LR1010
 Identification: Quantitative



MicroFast® Environmental *Listeria* (EL) Count Plate

Result in 18 -24 h
 Culture temperature: 36±1°C
 Interpretation: blue-green colonies
 Product No.: LR1008
 Identification: Quantitative

Ordering information

Product Name		Catalog No.	Specification
Aerobic Count Plate		LR1001	25 pcs
Coliform Count Plate		LR1002	25 pcs
Yeast & Mold Count Plate		LR1003	25 pcs
<i>Staphylococcus aureus</i> Count Plate		LR1005	25 pcs
<i>Staphylococcus aureus</i> Confirmation Plate		LR1005Q	25 pcs
Coliform & <i>E. coli</i> Count Plate		LR1007	25 pcs
Enterobacteriaceae Count Plate		LR1011	25 pcs
<i>Bacillus cereus</i> Count Plate		LR1010	25 pcs
Environmental <i>Listeria</i> Count Plate		LR1008	25 pcs

MicroFast[®] Real Time PCR

Food Microorganism detection moves into molecular era

MicroFast[®] Real Time PCR provides specific primers and probes. PCR amplification is detected by Taqman probe which is degraded during PCR process and releases fluorophore. The PCR instrument generates the amplification curve according to the fluorescence signal intensity and qualitatively detect the target pathogens in the sample.

Simple but Professional

Product Features

Precise and reliable results

The principle is based on the quantitative Realtime PCR technology and the kit provides specific primers and probe.

Rapid testing

Pre-packed lysis buffer and Pre-mixed solution are provided. No extra reagents required.

Multiple pathogen detections could run simultaneously. Detection process identifies results in 24 hours.

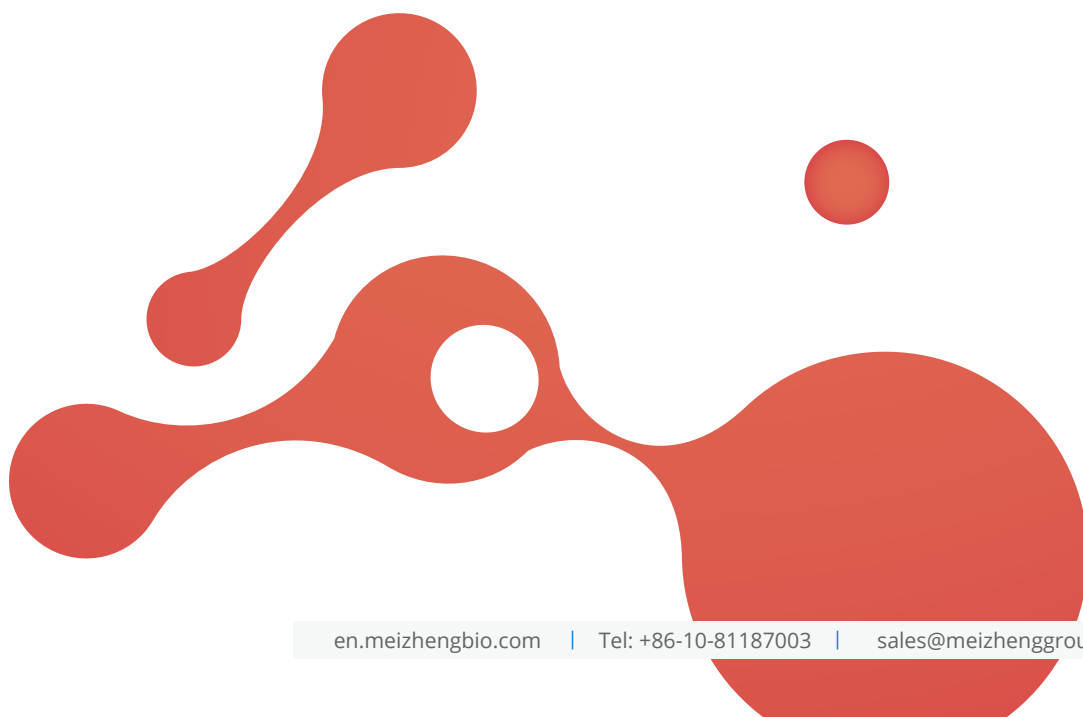
Open system

The open system enables customized testing solutions.



Ordering information

Product Name	Catalog No.	Specification
<i>Enterobacter sakazakii</i> Real Time PCR kit (dried reagent)	LR70401F	96T
<i>Staphylococcus aureus</i> Real Time PCR kit (dried reagent)	LR70501F	96T
<i>Salmonella</i> Real Time PCR kit (dried reagent)	LR70601F	96T
<i>Listeria monocytogenes</i> Real Time PCR Kit (dried reagent)	LR70811F	96T
<i>Bacillus cereus</i> Real Time PCR Kit (dried reagent)	LR71001F	96T
<i>E.coli</i> O157 Real Time PCR Kit(dried reagent)	LR70711F	96T
STEC Real Time PCR Kit(dried reagent)	LR707H1F	96T



PureTrust™

ATP Intelligent Hygiene Monitoring System

PureTrust™ ATP Intelligent Hygiene Detection System is consisted by Intelligent Fluorescence Detector and Surface Swabs. Based on the principle of firefly luminescence, the system utilizes luciferase-luciferin's reaction system to quickly detect adenosine triphosphate (ATP) to monitor the hygiene status.

Product Features

Simple Operation and fast detection

Suitable for on-site testing.

Obtain accurate result within 30 seconds after sampling.

Easy for the staff to use with standardized operation.

Accurate and reliable

Test ATP presented in microbes and organic residues – the total amount of biological residues, to monitor cleaning effect of sanitation program.

Portable and flexible

Flexible swab design to achieve sampling even in tough area. The instrument can be operated with one hand.



Ordering information

Product Name	Catalog No.	Specification
PureTrust™ ATP Intelligent Fluorescence Detector	MF1000 premium	1 pc / box
PureTrust™ Surface Swab	PTS100	10 pcs / pack, 5 packs / box

MicroFast[®] Rapid Test Cassette

MicroFast[®] Rapid Test Cassette

This immunoassay test uses a double antibody sandwich format to detect the pathogens in the samples within 8 minutes. It is suitable for the rapid detection of pathogens such as *Salmonella*, *Staphylococcus aureus* and *E. coli* O157 in various food.

Product Features

- **Fast**, Only 8 minutes for detection.
- **Simple**, Qualitative result interpretation according to the presence of test line.
- **Stable performance and high sensitivity**.

Ordering information

Product Name	Sensitivity (CFU/mL)	Catalog No.	Specification
<i>Staphylococcus aureus</i> Rapid Test Cassette	1x10 ⁵ —1x10 ⁷	LR20501	50T
<i>Salmonella</i> Rapid Test Cassette	2x10 ⁵ —2x10 ⁷	LR20601	50T
<i>E.coli</i> O157 Rapid Test Cassette	1x10 ⁵ —2x10 ⁵	LR20711	50T
<i>Listeria</i> Rapid Test Cassette	3x10 ⁵ —3x10 ⁶	LR20801	50T





Beijing Meizheng Bio-Tech Co., Ltd.

Address: No.2 Building, No.8 courtyard, Fenggusilu
Road, Yanqing District, Beijing, P.R. China.

Tel: +86-10-81187003

Zip: 102101

Shandong Meizheng Bio-Tech Co., Ltd.

Address: No. 69 Zhaoyang North Road, High-tech Zone,
Rizhao, Shandong Province, P.R. China.

Tel: +86-63-36117666

Zip: 276800